

Our ref: - KP1/9A.3/OT/54/23-24/Add3/JN/mb

19th June, 2024

Your ref:

TO: ALL PROSPECTIVE BIDDERS

RE: ADDENDUM NO. 3 TO THE TENDER NO. KP1/9A.3/OT/54/23-24 FOR SUPPLY OF GALVANIZED STEEL STRUCTURES FOR IMPLEMENTATION OF PREMIUM CUSTOMERS SCHEMES AND FOR VARIOUS PRIMARY AND SECONDARY SUBSTATIONS.

Please refer to the above Tender.

We make the following amendments to the Principal Tender Document (*hereinafter abbreviated as the PTD*)

1. RELATIONSHIP WITH THE PRINCIPAL TENDER DOCUMENT

Save where expressly amended by the terms of this Addendum, the Principle tender Document shall continue to be in full force and effect. The provisions of this addendum shall be deemed to have been incorporated in and shall be read and constructed as part of the Principle tender Document.

2. CLARIFICATION

The following responses are made to clarifications sought on various issues on the tender document.

Query No.	Clarification sought by Bidder	KPLC Response
1	Error in numbering of the price schedule	Numbering for Price schedule has been corrected; No. 1-11
2	The drawing provided for the below are the same; Item 1. SK No. 09774 Sht. 20 Item 8. SK. No. 08409 Sht. 3D	Item 1 and Item 8 are different and the drawing numbers are also different Item 1 is a support structure for a 33/11kv Air break switch new drawing with same sk no. attached whereas item 8 is a support structure for 66kv isolator/switch.
3	Drawings provided for the below items; the lengths on the drawings and the lengths given on the price/delivery schedule are not the same; Item 1. SK No. 09774 Sht. 20 Item 2. SK No. 09769 Sht. 3 Item 5. SK No. 09774 Sht. 18	Item 1. Adopt length(5000mm) in price schedule -new drawing with same sk no 09774sht 20 attached Item 2. Adopt length(5000mm) in price schedule new drawing sk no. 09769 sht3 attached Item.5 Adopt length (2400mm)on price schedule new drawing sk no. 09774sht 18 attached
4	Drawings provided for the below items the sheet no is different from the price/delivery schedule Item 9. SK No. 08409 Sht. D- on the drawing- SK No. 08409/A Sheet 1 Item 10. SK No. 08409 Sht. D- on the drawing- SK No. 08409/A Sheet 1	Item 9. Drawing sk 08409 sht 3C attached replaces drawing sk 08409/A sht1 in the technical specifications for 66kV Voltage transformer Item 10 Drawing SK 08409sht 3C attached replaces drawing sk 08409/A sht 1 in the technical specification for 66kv Current transformer Note:66kv Current transformer and 66kv voltage transformer share the same drawing sk 08409sht 3C

Query No.	Clarification sought by Bidder	KPLC Response
5	Kindly clarify if the below codes are for the same item: 1. SK No. 09769 Sht. 2 2. SK. No. 06779 Sht. 2	The two sk no. 09769sht 2 and 06779 sht2 refer to the same item 33/11kv Busbar.
6	Clarify whether Type Test Report Shall Not be more than 5 years under ITT 15.2 No. 5 or not more than 10 years under Mandatory Technical Requirements	Type Test Report Shall Not be more than 10 years
7	Are we required to fill separately the information since its already provided by us in the Audited Financial statements, financial situation Table & Average Annual Turnover Table	Fill as per the requirements on the tender document.
8	Are we required to fill tables on page 78 and 79	The tables are not applicable

3. **Tender Closing Date**

The tender closing date has been extended to be 25th June 2024 at 10:00am, opening of the Tender will take place thereafter on the same day at 10.30am.

Note; Those who will have submitted bid securities need not to extend, as they will be considered from the initial tender closing date of 21.06.2024

All other terms and condition remains as per the tender document.

Yours faithfully,

FOR: THE KENYA POWER & LIGHTING COMPANY PLC



DR. JOHN NGENO, OGW

GENERAL MANAGER, SUPPLY CHAIN & LOGISTICS

10. PRICE SCHEDULE

Lot: Galvanized Steel Structures for implementation of premium customers schemes and for various 220/132/66/33/11kv Substations.

Item no	Sk no	Description	Final Destination as specified in TDS	Physical Unit	Quantities Required	Unit Price DDP VAT Exclusive	Total Price DDP VAT Exclusive	Total Price DDP VAT inclusive
1	09774 Sht. 20	33/11kv Air break galvanized steel structure 150mmx150mmx6mm square tube 5000mm high	Dandora Depot	Pcs	25			
2	09769 sht. 3	33/11kv post insulator/surge diverter galvanized steel structure 150mmx150mmx6mm square tube 5000mm high	Dandora Depot	Pcs	22			
3	09769 Sht. 2	33/11kV busbar galvanized steel structure 7620mm high	Dandora Depot	Pcs	6			
4	09774 sht18	33kv current/Voltage transformer galvanized steel structure 2400mm	Dandora Depot	Pcs	23			
5	09769 sht. 4	11kv cable support structure 4000mm high	Dandora Depot	Pcs	16			
6	09774 sht 9A	Lightning mast galvanized steel structure 16700mm high	Dandora Depot	Pcs	10			
7	08409 sht. D	66kv isolator galvanized steel structure	Dandora Depot	Pcs	15			
8	08409 sht. C	66kv voltage transformer galvanized steel structure	Dandora Depot	Pcs	18			
9	08409 sht. C	66kv current transformer galvanized steel structure	Dandora Depot	Pcs	18			
10	08409 sht. G	66kv post insulator galvanized steel structure	Dandora Depot	PCS	9			
11	08409 sht. 3F	66kv surge diverter galvanized steel structure	Dandora Depot	PCS	15			

Name of tenderer *[insert complete name of tenderer]*

Signature of tenderer *[signature of person signing the Tender]*

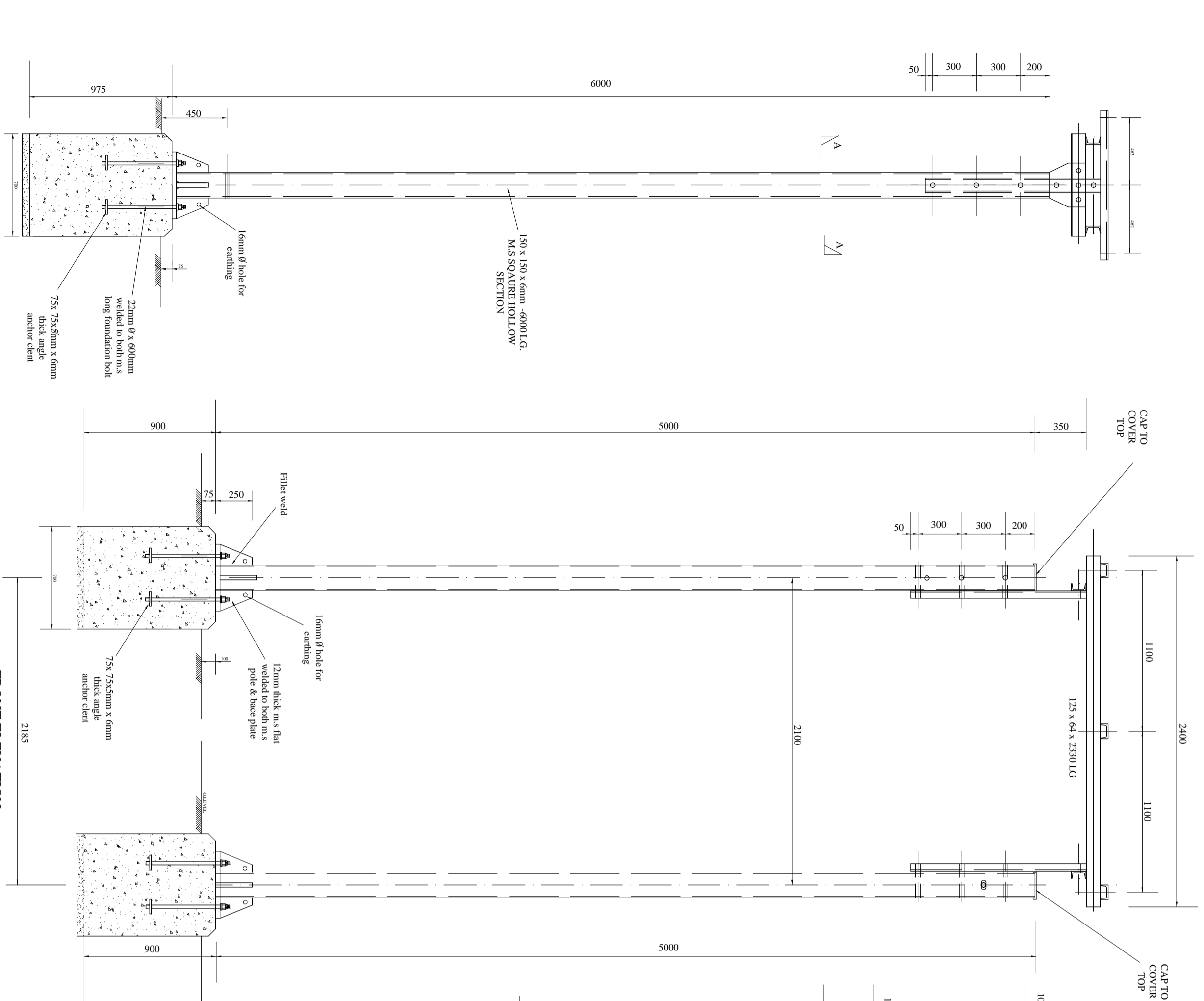
Date *[Insert Date]*

NOTES: -

1. Bidders must quote for all items in the lot to qualify for award of that particular lot.
2. Prices should be correctly computed subject to Section 79 (2) (b) of the PPADA. Any errors or miscalculations in the subtotals will lead to disqualification as per regulation 74 (2) of the PPADR 2020 and financial evaluation criteria.
3. The Tenderer shall fill in these Price Schedule Forms in accordance with the instructions indicated. The list of line items of the Price Schedules shall coincide with the List of Goods specified by KPLC in the Schedule of Requirements. The quantities are

estimated to cover the contract period.

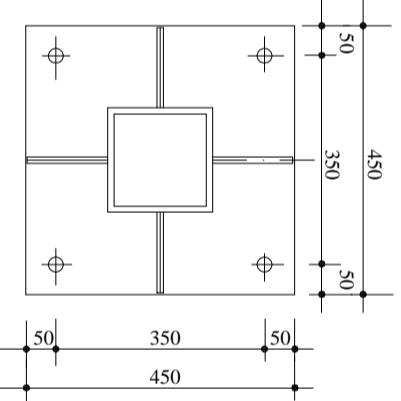
4. **The offered unit price MUST be rounded to two decimal places. Where the Tenderer fails to round the offered unit price as required, then, the offered unit price shall be rounded down-wards to two decimal places and used for the purposes of this tender.**
5. **The unit prices indicated on the KPLC tendering portal should be exclusive of VAT and the quoted price not be subject to change for the contract period.**
6. **Bidders should use the prevailing VAT rate. However, prices entered in the KPLC-SRM tendering portal should be exclusive of VAT. In case of discrepancies between the price keyed in the SRM portal and those on this price schedule uploaded as an attachment, the latter shall prevail.**
7. **The Bidder's grand totals should be the same as the tender sum indicated in the Tender Form and should be correctly computed.**



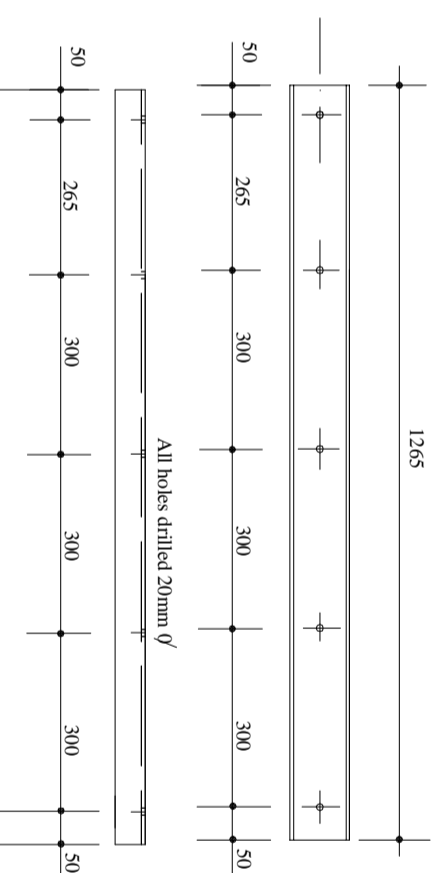
NOTES
This drawing is to be read in conjunction with
SK.No. 09774 sht15 & 09126 sht35/2

FRONT ELEVATION
STEEL STRUCTURE WITH 11kV A.B.S.W.
TAPE IN ISOLATOR & AUTO RECLOSURE

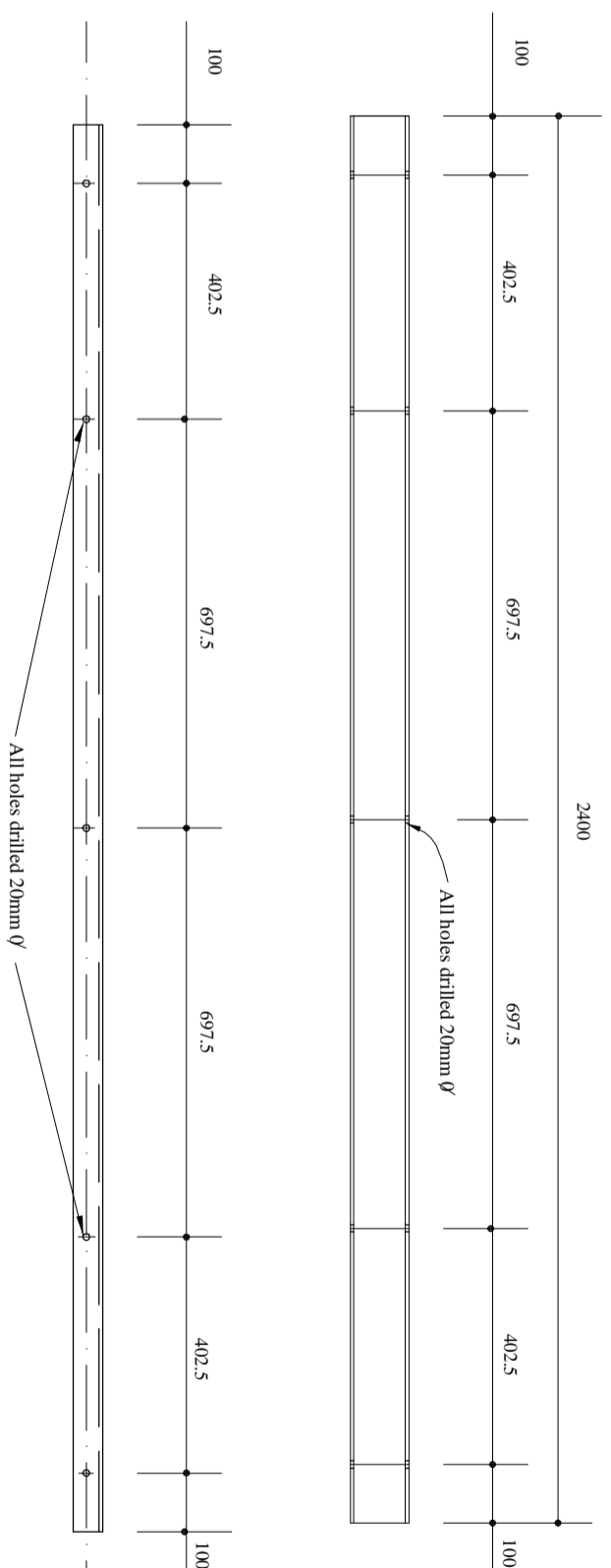
DETAILS OF 20mm THICK
PLATE BASE
(6mm thick)



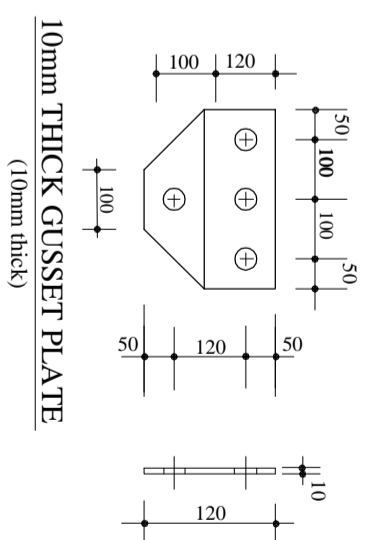
100x 50mm R.S CHANNEL
(6mm thick)



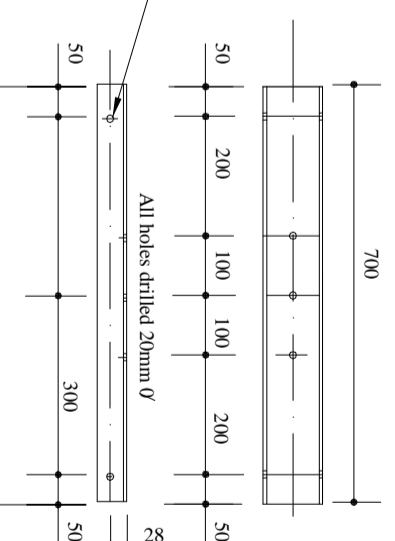
125x 64 x 6mm R.S CHANNEL (6mm thick)
A/B SWITCH SUPPORT



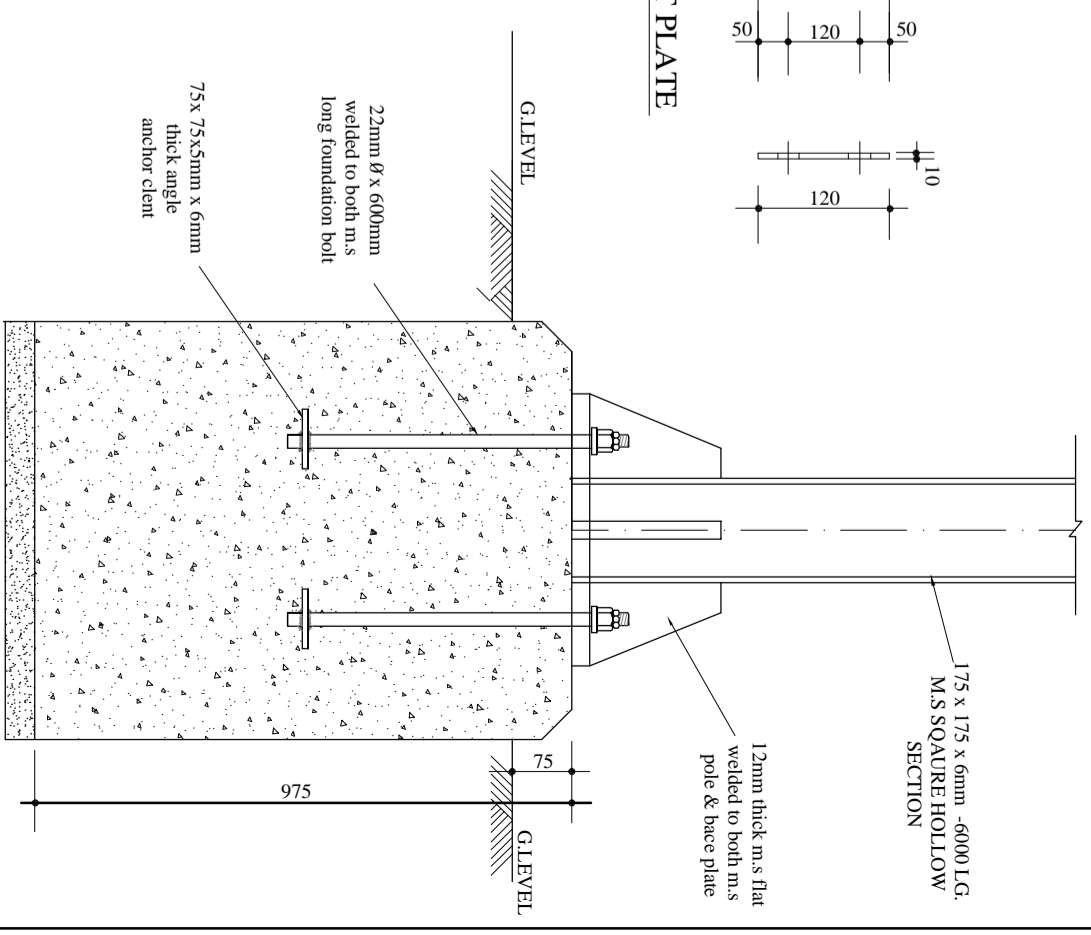
10mm THICK GUSSET PLATE
(10mm thick)



100x 50mm R.S CHANNEL
(6mm thick)



R.C FOOTING FOR A/B SWITCH
STEEL STRUCTURE
(6mm thick)



GENERAL NOTES:

- 1) Foundations are to rest on a firm sub soil. If at depth shown shown, nature of soil is unsuitable excavation should be carried deeper to reach firm stratum.
- 2) All material to be mild steel to B.C. 4360/43D
- 3) All steel work to be free from rust, dirt, burrs etc then galvanized by hot dip process. Thickness and quality of Zinc coating to withstand tests of Is 729.
- 4) Bolt threads are to be recut with slack dies after galvanizing and sent on site offit

Sheet 20

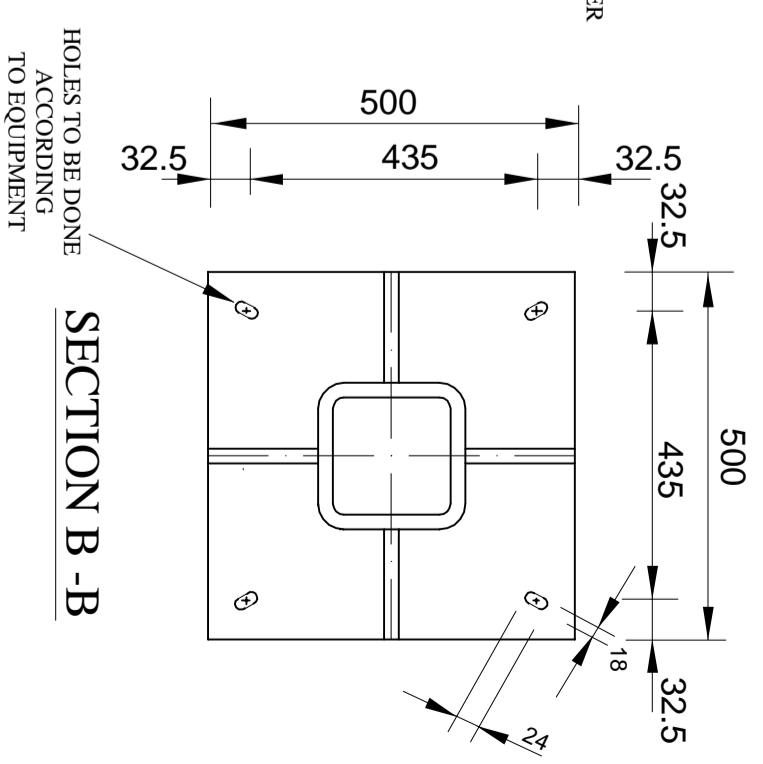
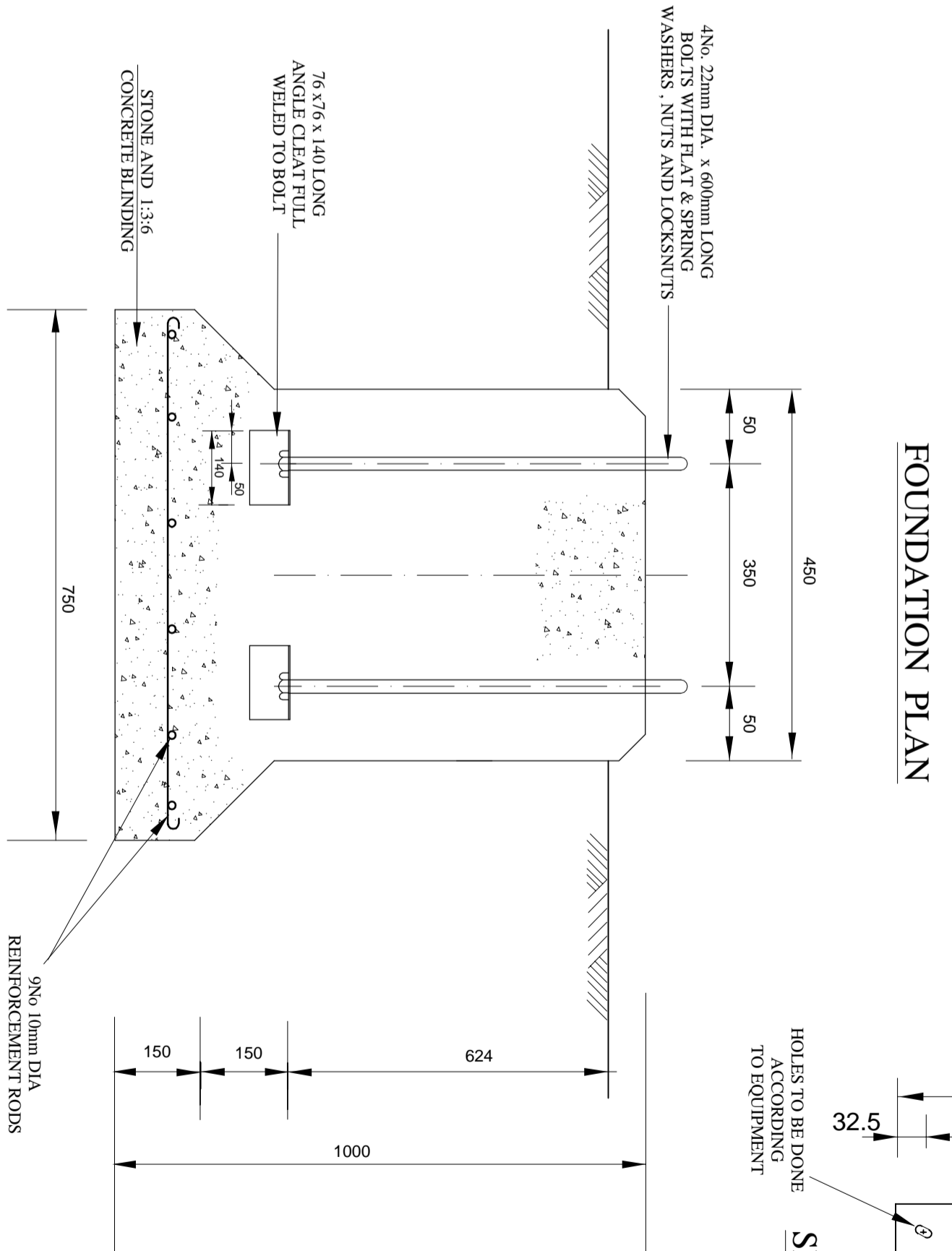
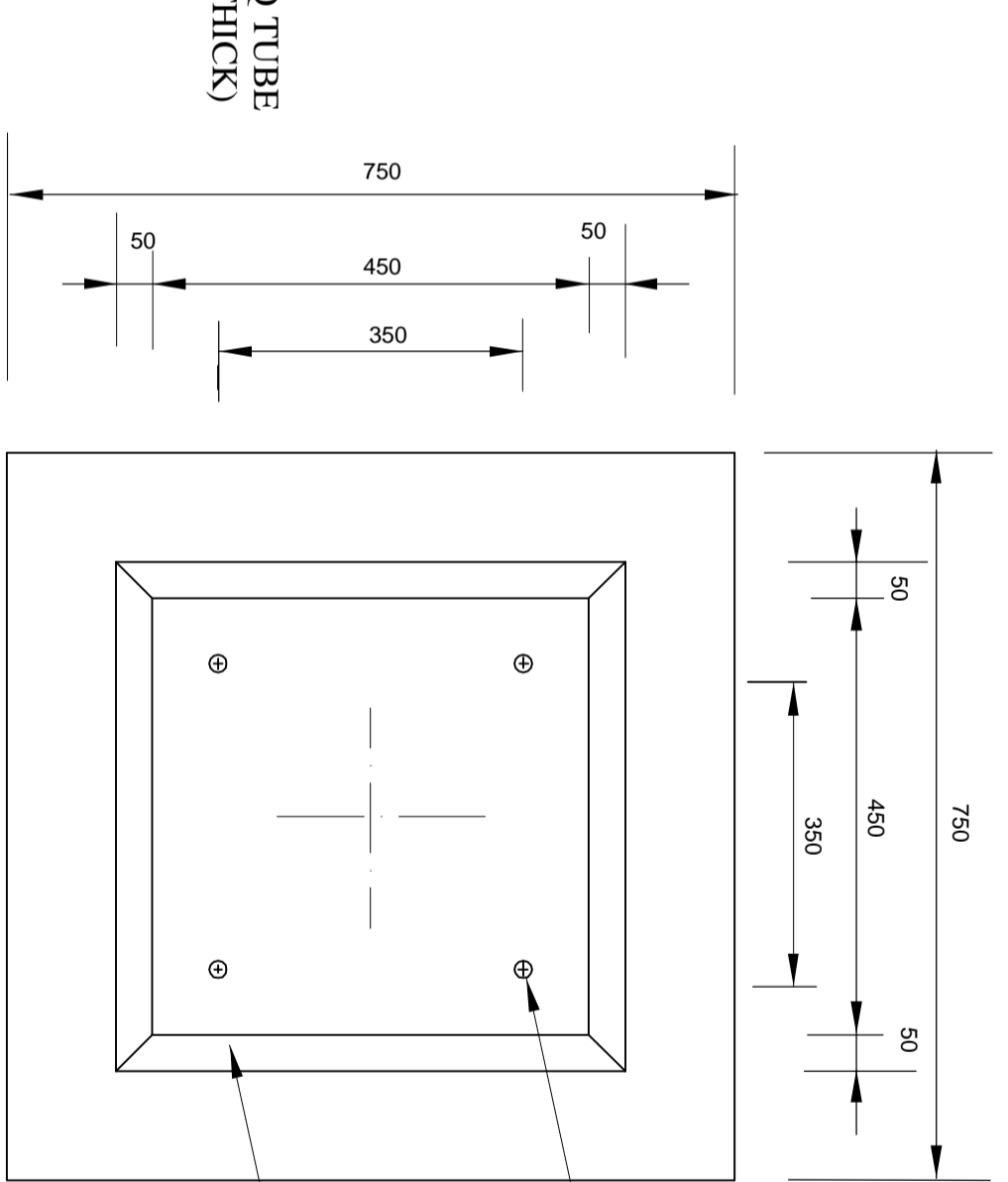
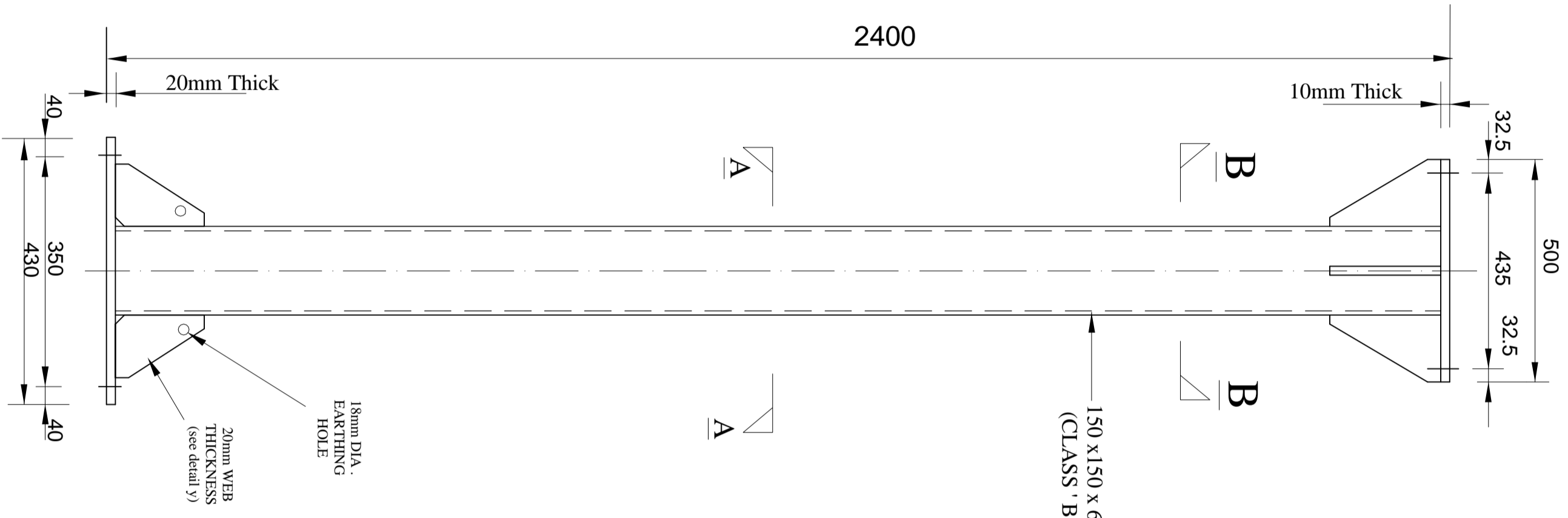
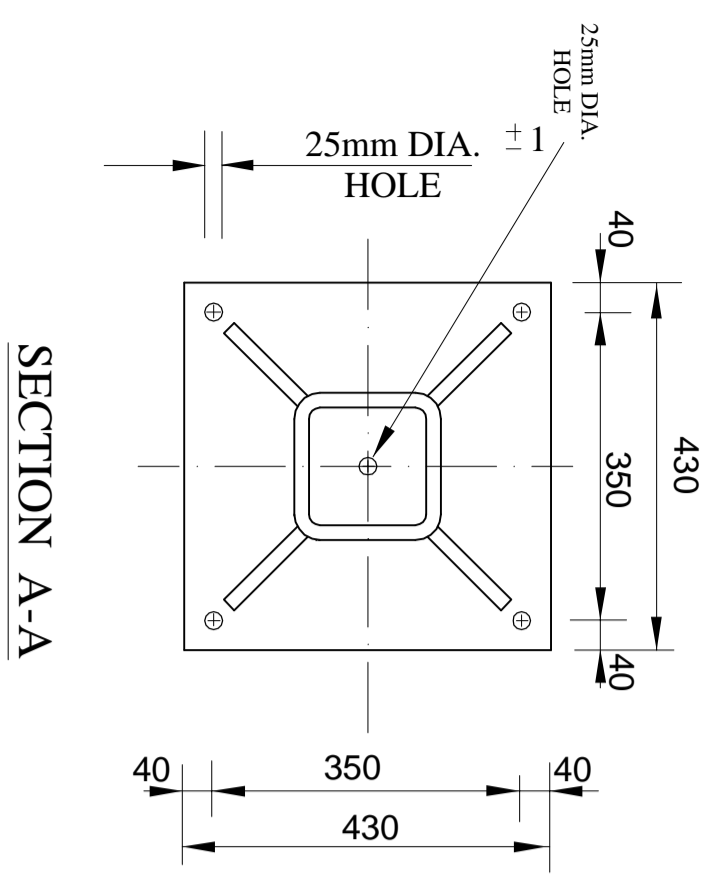
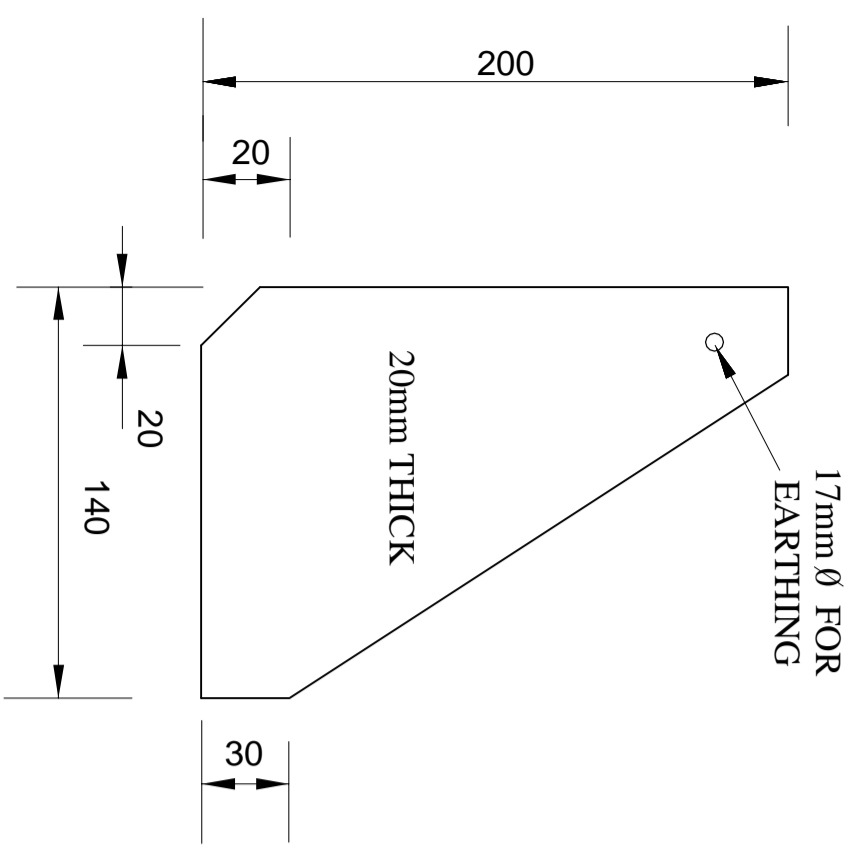
CHECKED	DATE	NAME	SIGN
ENGINEER I/C			
PRINCIPAL D/MAN		B.Gaitho	
DRAWN	21/07/2009	S.M.Kimani	<i>Kimani</i>
TRACED			

REF	REVISION	DATE	SIGN	CHECKED	DATE
1					
2					
3					
4					
5					
6					

DETAILS OF STEEL STRUCTURE FOR
33KV A/B SWITCH (5m HIGH)

K. P. & L. Co. Ltd
SK. No. 09774






APPROVED	DATE	NAME	SIGN
CHECKED ENGINEER I/C			
CHECKED PRINCIPAL D/MAN		B. Gaiho	
DRAWN	21/07/2009	S.M. Kimani	<i>Kimani</i>
TRACED			

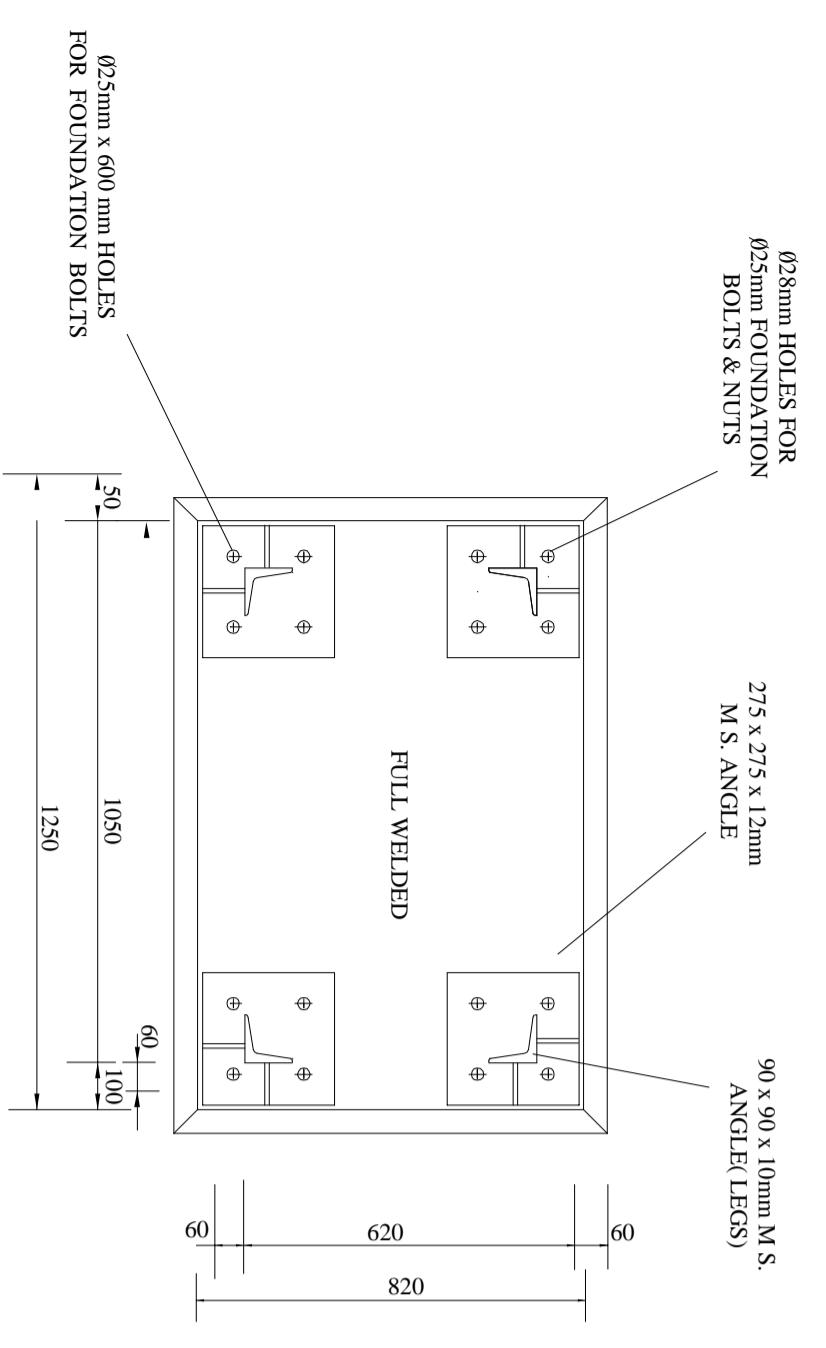
REF	REVISION	DATE	SIGN	CHECKED	DATE
1					
2					
3					
4					
5					
6					

DETAILS OF 33& 11KV CTS & VTS. STRUCTURE - STEEL
SCALE 1:10

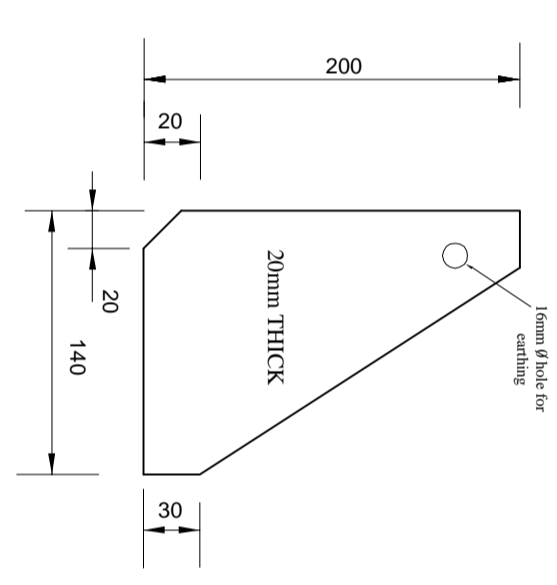
K. P. & L. Co. Ltd
SK. No.09774

SHEET 18

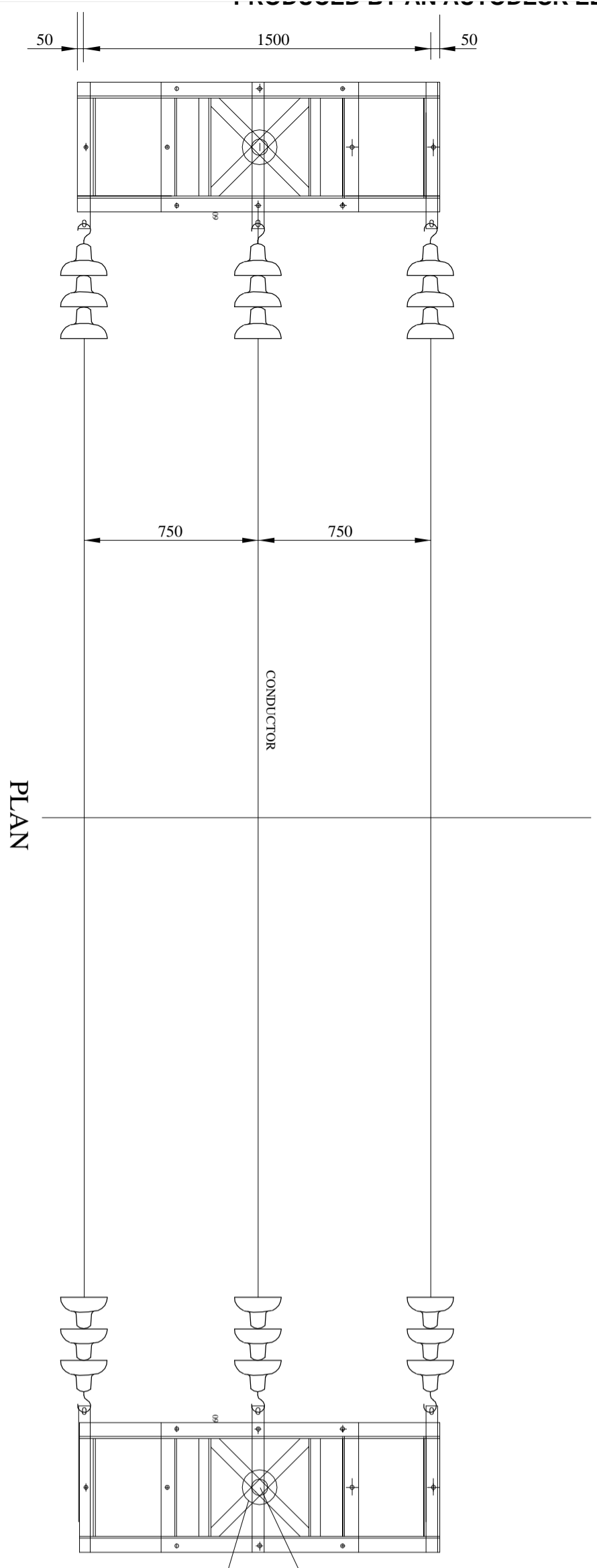




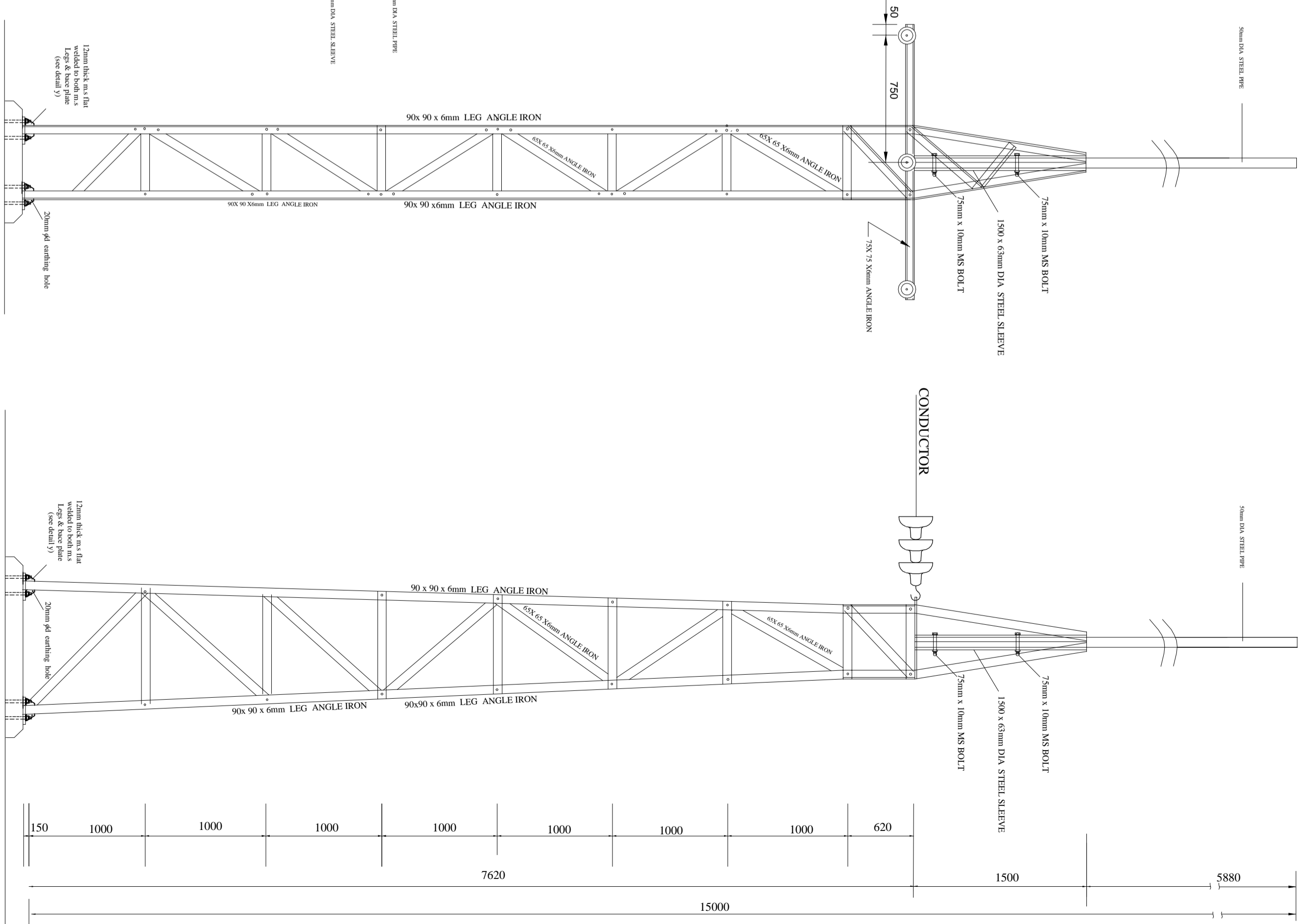
BOTTOM PLAN



DETAIL Y
SNO. 01E
SCALE 1:25



PLAN



SHEET 2

APPROVED	DATE	NAME	SIGN
CHECKED ENGINEER I/C			
CHECKED PRINCIPAL D/MAN		B.Gadhito	
DRAWN	21/07/2009	S.M.Kimani	Kimani
TRACED			

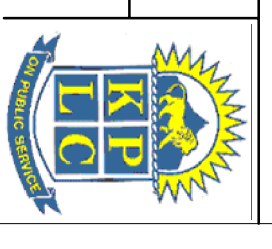
REF	REVISION	DATE	SIGN	CHECKED	DATE
1					
2					
3					
4					
5					
6					

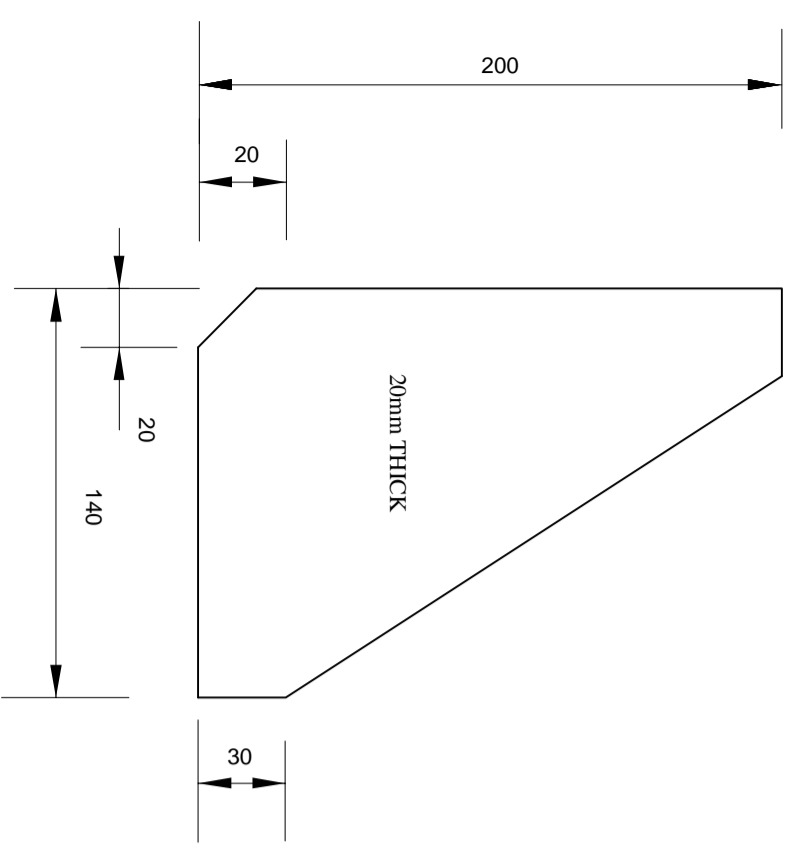
DETAILS OF STEEL STRUCTURES FOR 33KV BUS BAR (33/11KV)

SCALE 1:100

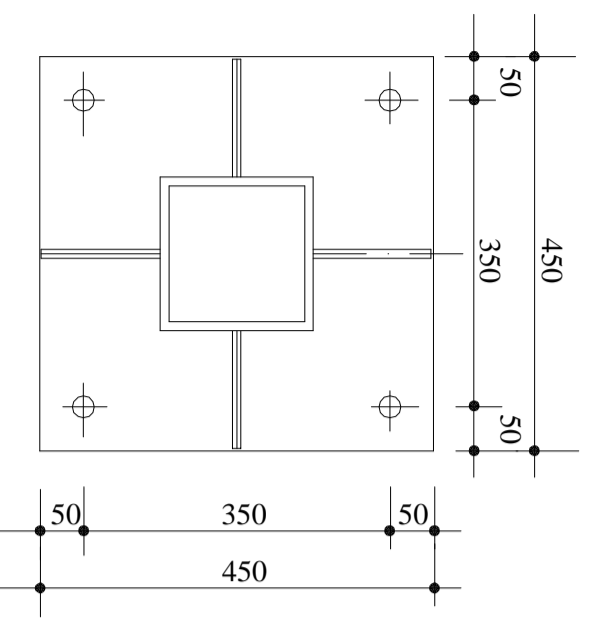
K. P. & L. Co. Ltd

SK. No.09769





DETAIL Y
8No. OFF
SCALE 1:25

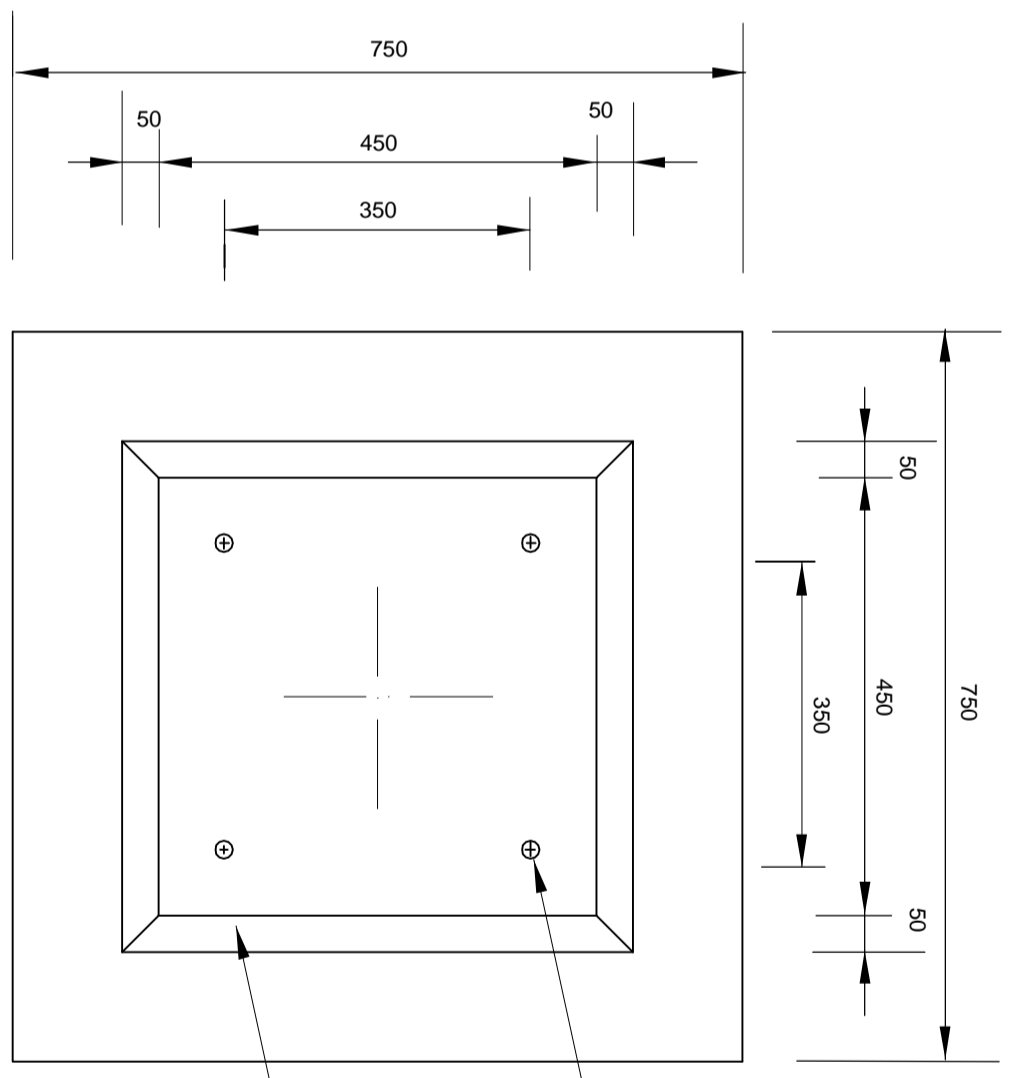
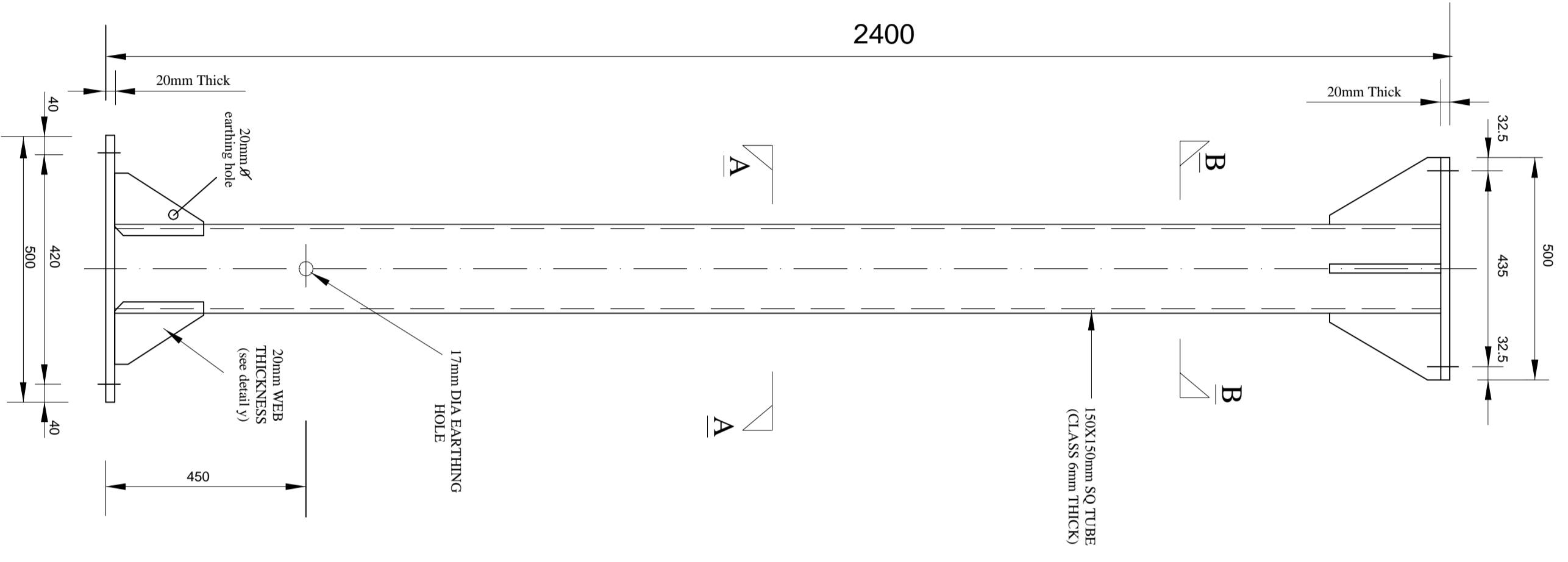


DETAILS OF 20mm THICK PLATE BASE
(6mm thick)
SECTION A-A

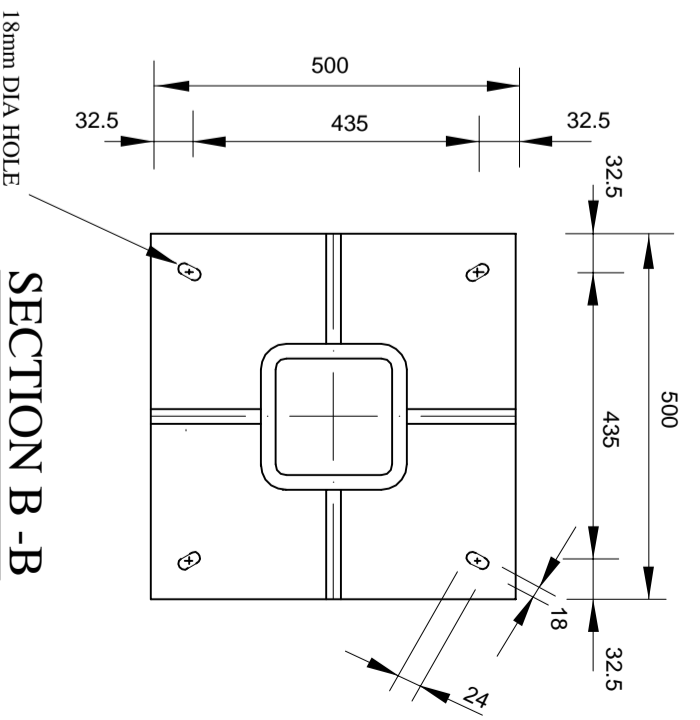
APPROVED	DATE	NAME	SIGN
CHECKED ENGINEER I/C			
CHECKED PRINCIPAL D/MAN		B. Gaiho	
DRAWN	21/07/2009	S.M. Kimani	<i>Kimani</i>
TRACED			

REF	REVISION	DATE	SIGN	CHECKED	DATE
1					
2					
3					
4					
5					
6					

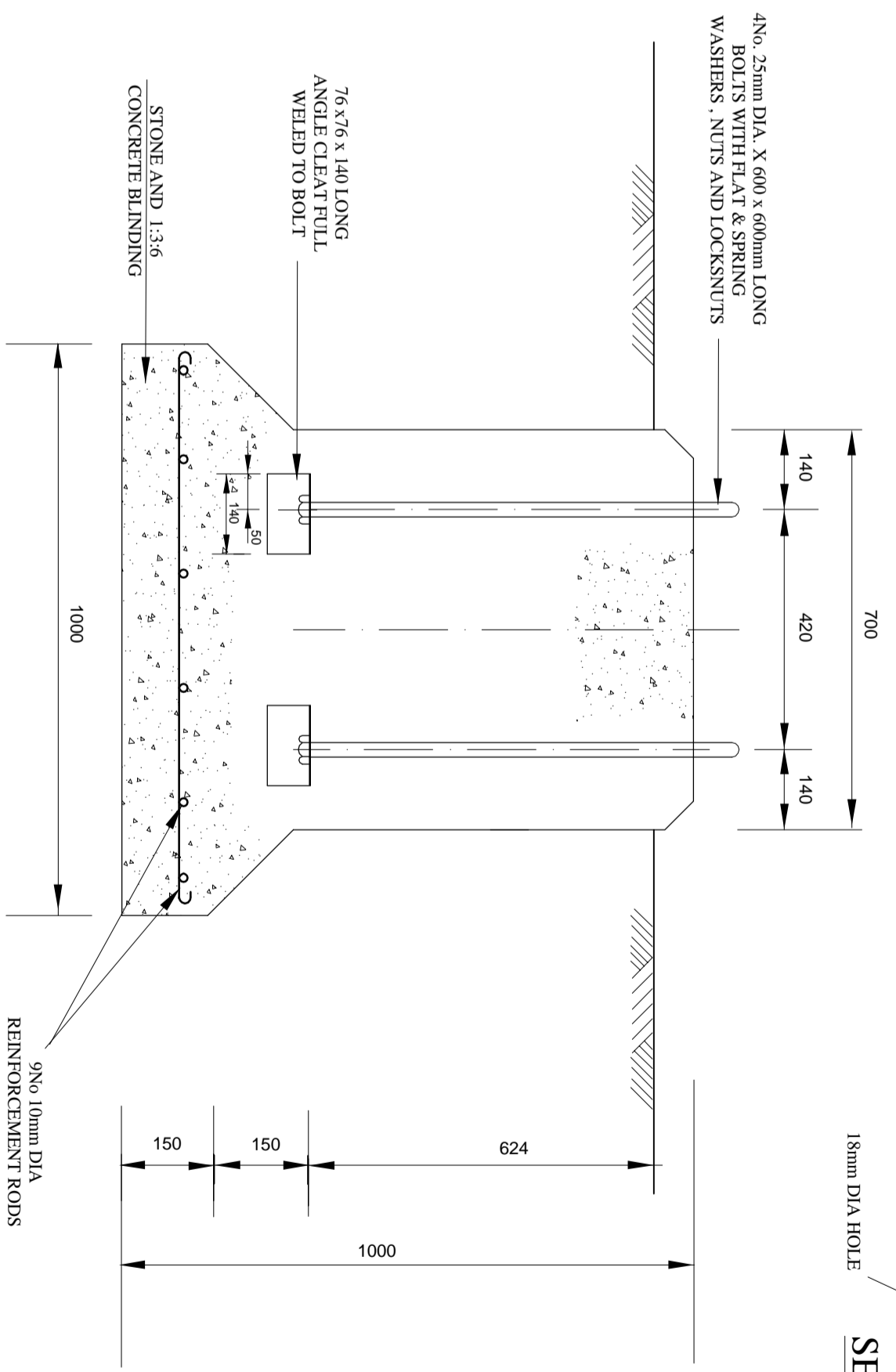
CTs ELEVATION



FOUNDATION PLAN



SECTION B-B



FOUNDATION PLAN

SHEET 3C

DETAILS OF 66KV CTs & VTs. STRUCTURE - STEEL

SCALE 1:10

K. P. & L. Co. Ltd

SK. No. 08409

