



Kenya Power

The Kenya Power & Lighting Co. Ltd.
Central Office – P.O. Box 30099, Nairobi, Kenya
Telephone – 254-02-3201000
Fax No. 254-02-3201889
Stima Plaza, Kolobot Road

Our Ref: KP1/9A.3/OT/12/23-24

6th November, 2023

TO ALL PROSPECTIVE TENDERERS

RE: ADDENDUM NO. 4 TO THE TENDER NO. KP1/9A.3/OT/12/23-24 FOR SUPPLY OF EMERGENCY RESTORATION TOWERS (ERTs) AND GALVANISED STEEL STRUCTURES FOR IMPLEMENTATION OF PREMIUM CUSTOMERS SCHEMES AND FOR VARIOUS PRIMARY AND SECONDARY SUBSTATION

The following amendments are made to the specified provisions of the Tender document for Supply of Emergency Restoration Towers (ERTs) and Galvanized Steel Structures for implementation of premium customer's schemes and for various 220/132/66/33/11kv Substations for October 2023

1. RELATIONSHIP WITH THE PRINCIPAL TENDER DOCUMENT

Save where expressly amended by the terms of this Addendum, the Principal Tender Document shall continue to be in full force and effect.

The provisions of this Addendum shall be deemed to have been incorporated in and shall be read as part of the Principal Tender Document.

2. AMENDMENTS OF SECTION IV - SPECIFICATIONS

An amendment is made on Lot 1 specification No. KP1-6C-4-1-TSP-03-002 for Galvanized Steel structures for substations; to withdraw and replace Drawing 09774 sht 20 for 33/11kv Air break switch in the specification with the amended copy labeled **Appendix 1** attached.

3. TENDER CLOSING DATE

The tender closing date has been extended from **7th November 2023 to 14th November 2023 at 10:00am**, opening of the Tender will take place thereafter at the Auditorium, Stima Plaza on the same day at **10.30am**.

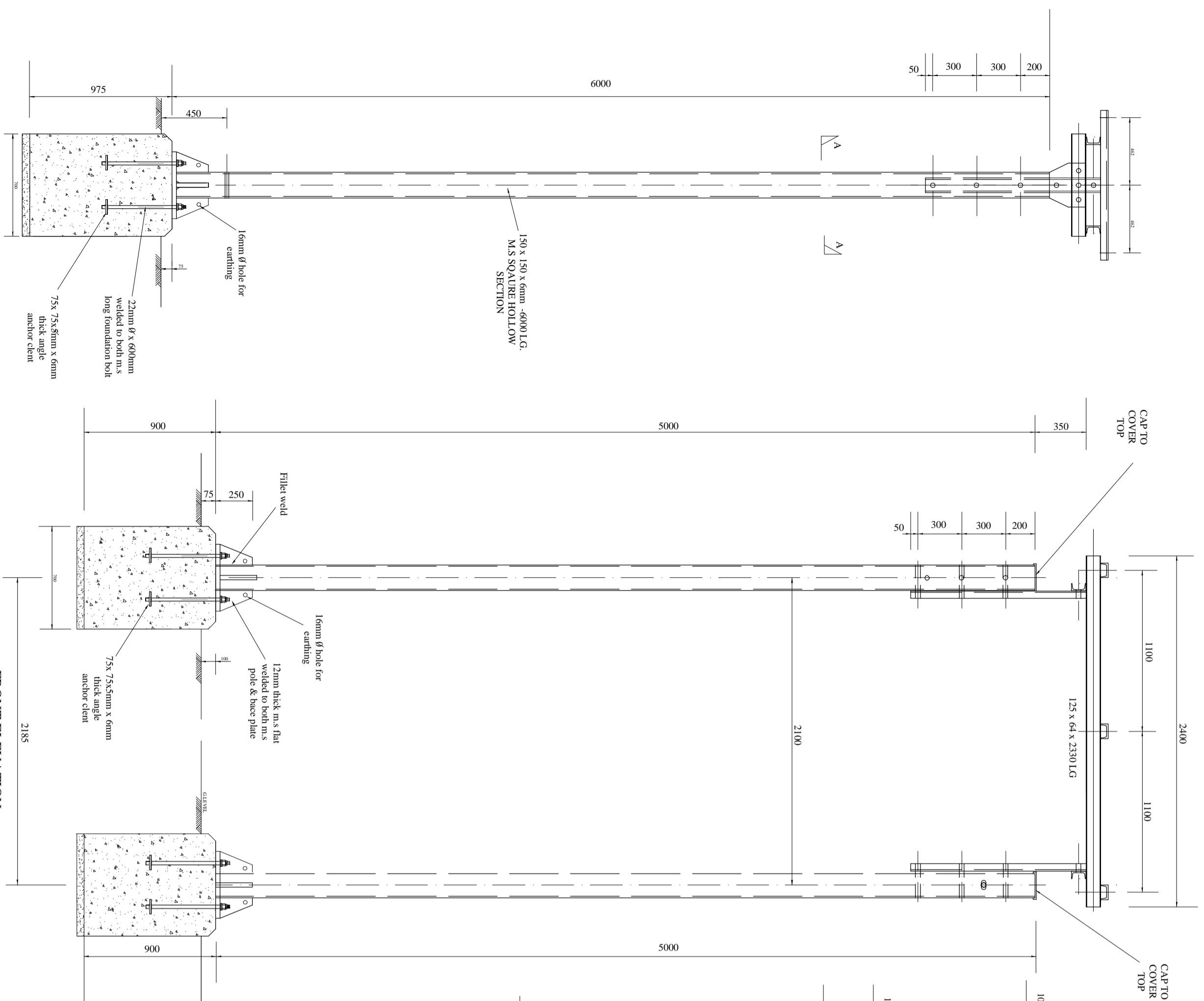
All the other terms and conditions remain as per the tender document.

Yours faithfully,

For: KENYA POWER & LIGHTING COMPANY LIMITED.



Dr. JOHN NGENO
GENERAL MANAGER, SUPPLY CHAIN

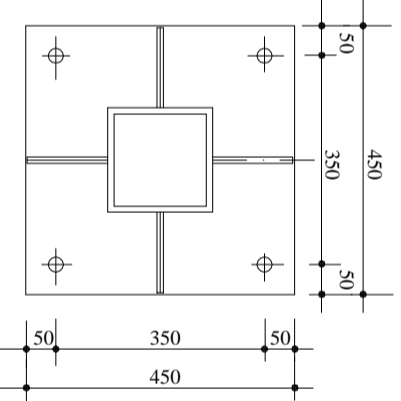


NOTES
This drawing is to be read in conjunction with
SK.No. 09774 sht15 & 09126 sht35/2

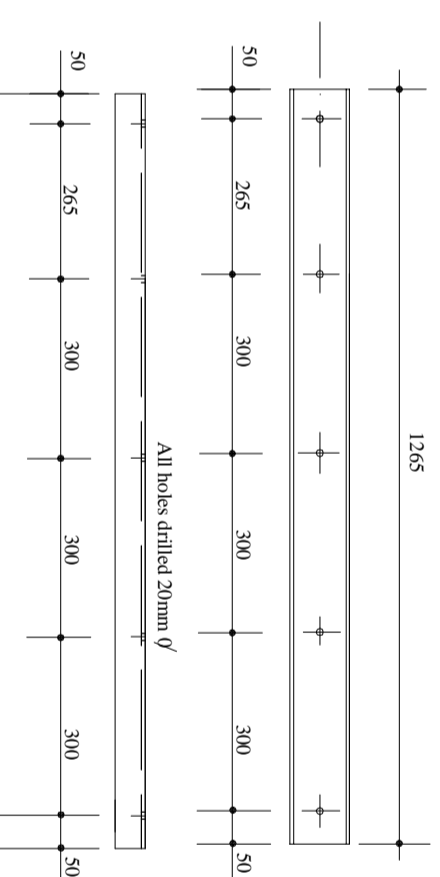
CHECKED	DATE	NAME	SIGN
ENGINEER I/C			
CHECKED			
PRINCIPAL D/MAN		B.Gaitho	
DRAWN	21/07/2009	S.M.Kimani	<i>Kimani</i>
TRACED			

REF	REVISION	DATE	SIGN	CHECKED	DATE
1					
2					
3					
4					
5					
6					

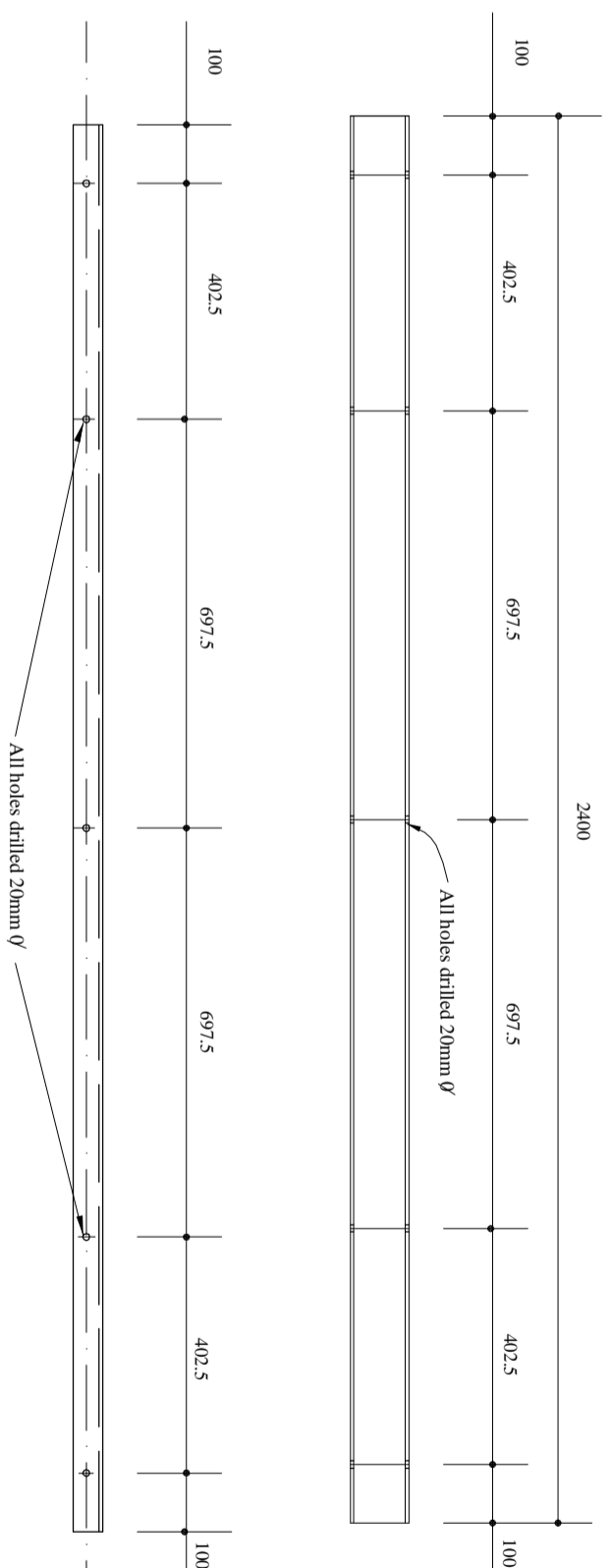
DETAILS OF 20mm THICK
PLATE BASE
(6mm thick)



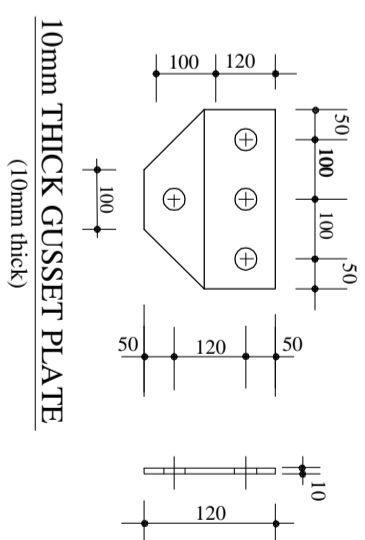
100x 50mm R.S CHANNEL
(6mm thick)



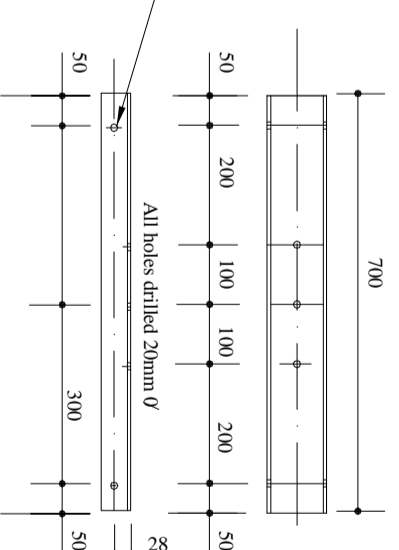
125x 64 x 6mm R.S CHANNEL (6mm thick)
A/B SWITCH SUPPORT



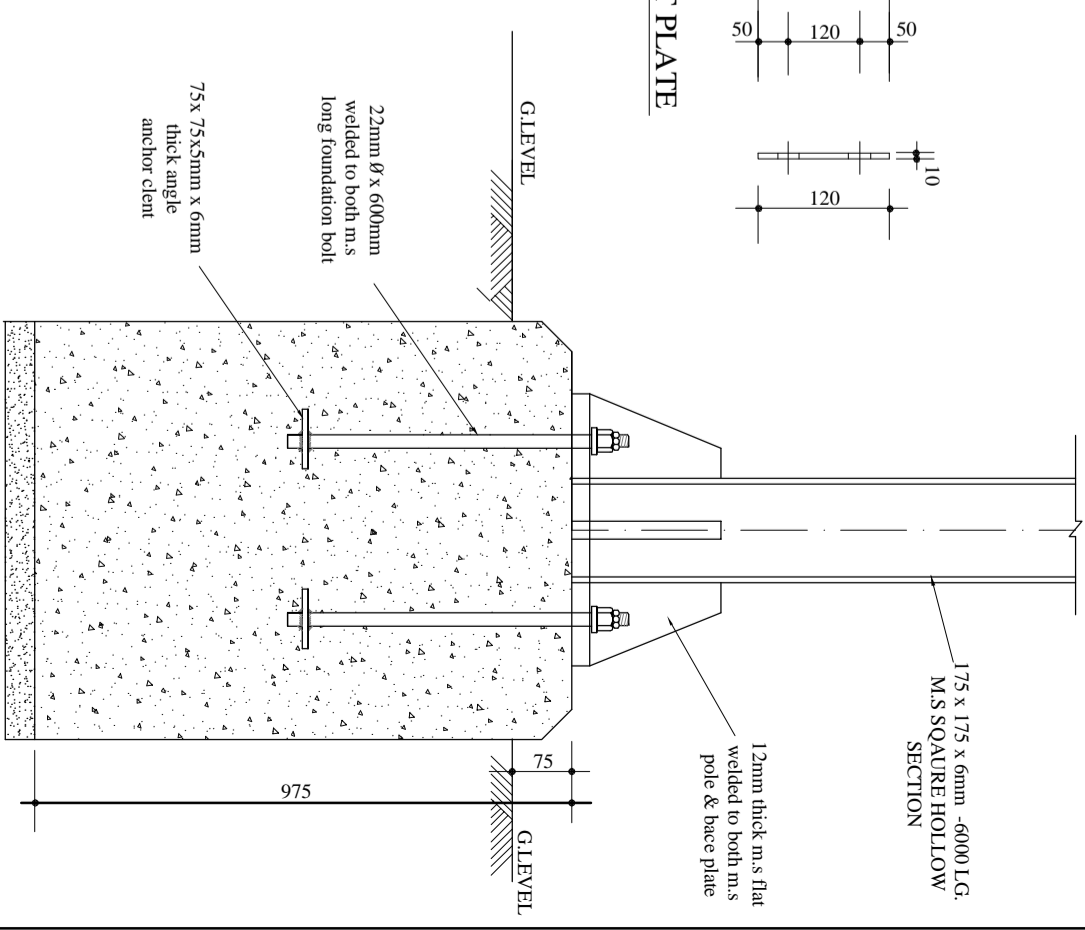
10mm THICK GUSSET PLATE
(10mm thick)



100x 50mm R.S CHANNEL
(6mm thick)



R.C FOOTING FOR A/B SWITCH
STEEL STRUCTURE
(6mm thick)



GENERAL NOTES:

- 1) Foundations are to rest on a firm sub soil. If at depth shown, nature of soil is unsuitable excavation should be carried deeper to reach firm stratum.
- 2) All material to be mild steel to B.C. 4360/43D
- 3) All steel work to be free from rust, dirt, burrs etc then galvanized by hot dip process. Thickness and quality of Zinc coating to withstand tests of Is 729.
- 4) Bolt threads are to be recut with slack dies after galvanizing and sent on site offit

Sheet 20

K. P. & L. Co. Ltd

DETAILS OF STEEL STRUCTURE FOR
33KV A/B SWITCH (5m HIGH)

SK. No. 09774

